



Electrolux
PROFESSIONAL

Modular Cooking Range Line 700XP 2-Hot Plates Electric Boiling Top Range

ITEM # _____

MODEL # _____

NAME # _____

SIS # _____

AIA # _____



371014 (E7ECED2R00)	2-Hot Plate (2,6 kW each) electric Boiling Top
371126 (E7ECED2R0N)	2-Hot Plate (2,6 kW each) electric Boiling Top

Short Form Specification

Item No. _____

To be installed on open base installations, bridging supports or cantilever systems. Two 2.6 kW cast-iron hot plates hermetically sealed to the one-piece top. Exterior panels in stainless steel with Scotch Brite finish. One piece pressed work top in 1.5 mm thick stainless steel. Right-angled side edges to allow flush-fitting junction between units.

Main Features

- Unit to be mounted on open base cupboards, bridging supports or cantilever systems.
- The two 2.6kW cast-iron plates are hermetically sealed to the one-piece top.
- The special design of the control knob system guarantees against water infiltration.
- IPx4 water protection.
- Suitable for countertop installation.

Construction

- External panel in Stainless Steel with Scotch Brite finish.
- One piece pressed 1.5 mm work top in Stainless steel.
- Model has right-angled side edges to allow flush fitting joints between units, eliminating gaps and possible dirt traps.

Optional Accessories

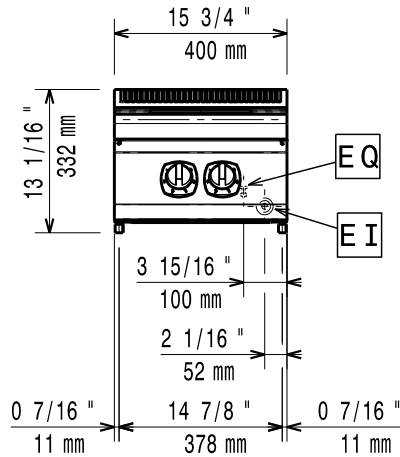
- | | |
|---|-------------------------------------|
| • Junction sealing kit | PNC 206086 <input type="checkbox"/> |
| • Support for bridge type installation, 800mm | PNC 206137 <input type="checkbox"/> |
| • Support for bridge type installation, 1000mm | PNC 206138 <input type="checkbox"/> |
| • Support for bridge type installation, 1200mm | PNC 206139 <input type="checkbox"/> |
| • Support for bridge type installation, 1400mm | PNC 206140 <input type="checkbox"/> |
| • Support for bridge type installation, 1600mm | PNC 206141 <input type="checkbox"/> |
| • Support for bridge type installation, 400mm | PNC 206154 <input type="checkbox"/> |
| • Water column with swivel arm (water column extension not included) | PNC 206289 <input type="checkbox"/> |
| • Water column extension for 700 line | PNC 206291 <input type="checkbox"/> |
| • Chimney upstand, 400mm | PNC 206303 <input type="checkbox"/> |
| • Right and left side handrails | PNC 206307 <input type="checkbox"/> |
| • Back handrail 800 mm | PNC 206308 <input type="checkbox"/> |
| • Chimney grid net, 400mm (700XP/900) | PNC 206400 <input type="checkbox"/> |
| • Frontal handrail, 400mm | PNC 216046 <input type="checkbox"/> |
| • Frontal handrail, 800mm | PNC 216047 <input type="checkbox"/> |
| • Frontal handrail, 1200mm | PNC 216049 <input type="checkbox"/> |
| • Frontal handrail, 1600mm | PNC 216050 <input type="checkbox"/> |
| • Large handrail - portioning shelf, 400mm | PNC 216185 <input type="checkbox"/> |
| • Large handrail - portioning shelf, 800mm (only for 371126) | PNC 216186 <input type="checkbox"/> |
| • 2 side covering panels for top appliances | PNC 216277 <input type="checkbox"/> |
| • Full size basket for 14 and 15lt free standing fryers (only for 371126) | PNC 921691 <input type="checkbox"/> |
| • 2 half size baskets for 12, 14 and 15lt fryers (only for 371014) | PNC 921692 <input type="checkbox"/> |

APPROVAL: _____

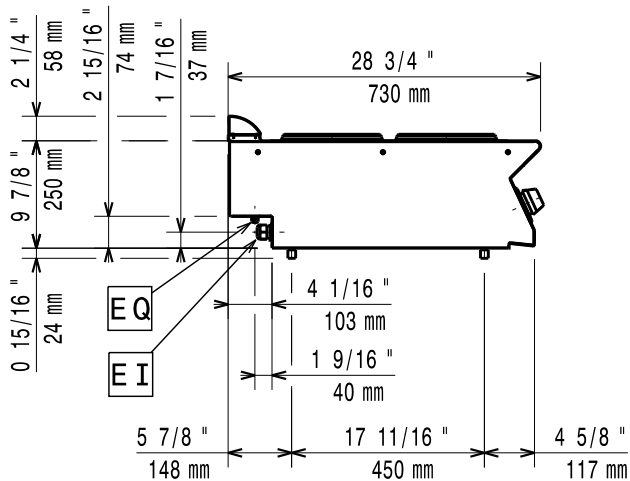


Experience the Excellence
www.electroluxprofessional.com

Front

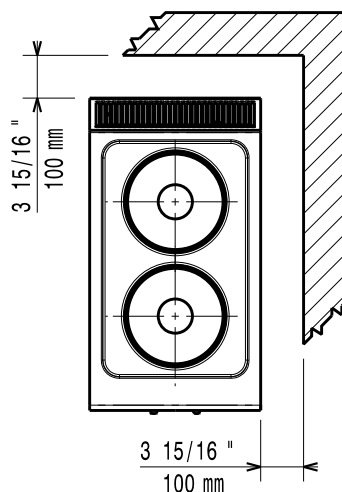


Side



EI = Electrical inlet (power)
 EQ = Equipotential screw

Top



Electric

Supply voltage:

371014 (E7ECED2R00)

380-400 V/3 ph/50/60 Hz

371126 (E7ECED2R0N)

230 V/3 ph/50/60 Hz

Total Watts:

5.2 kW

Predisposed for:

371014 (E7ECED2R00)

380-400V 3~ 50/60Hz
 4,5-5,2kW

Key Information:

Front Plates Power:

2.6 - 0 kW

Back Plates Power:

2.6 - kW

Front Plates dimensions:

Ø 230

Back Plates dimensions:

Ø 230

External dimensions, Width:

400 mm

External dimensions, Depth:

730 mm

External dimensions, Height:

250 mm

Net weight:

ISO 9001; ISO 14001 kg

Shipping weight:

24 kg

Shipping height:

371014 (E7ECED2R00)

530 mm

371126 (E7ECED2R0N)

540 mm

Shipping width:

460 mm

Shipping depth:

820 mm

Shipping volume:

0.2 m³

If appliance is set up or next to or against temperature sensitive furniture or similar, a safety gap of approximately 150 mm should be maintained or some form of heat insulation fitted.

Certification group:

371014 (E7ECED2R00)

EH72T

371126 (E7ECED2R0N)

N7CEI